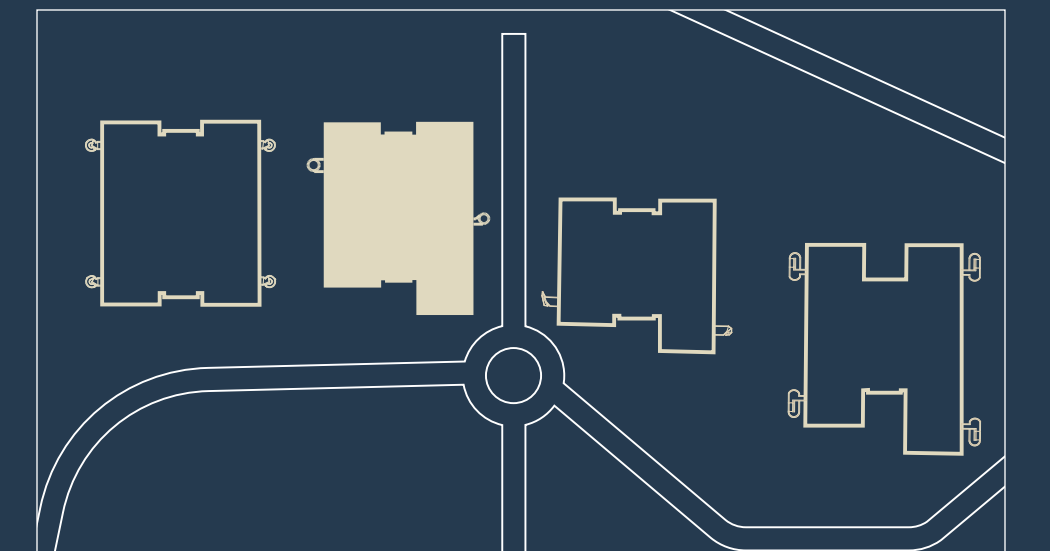
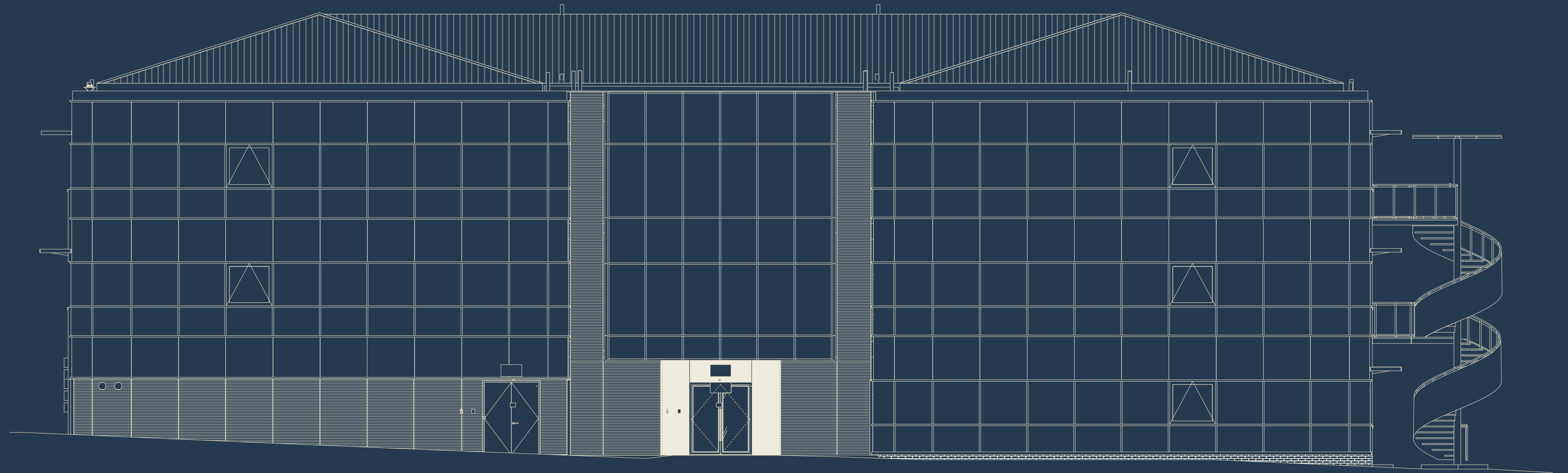


# CamLIFE 2

| Level        | sq ft         | sq m         |
|--------------|---------------|--------------|
| 2            | 1,625         | 151          |
| 1            | 20,075        | 1,865        |
| G            | 20,807        | 1,933        |
| LG           | 12,002        | 1,115        |
| <b>Total</b> | <b>54,509</b> | <b>5,064</b> |

Areas are approximate GIA including plant, lobby and other shared zones. Areas are subject to final measurement on completion.

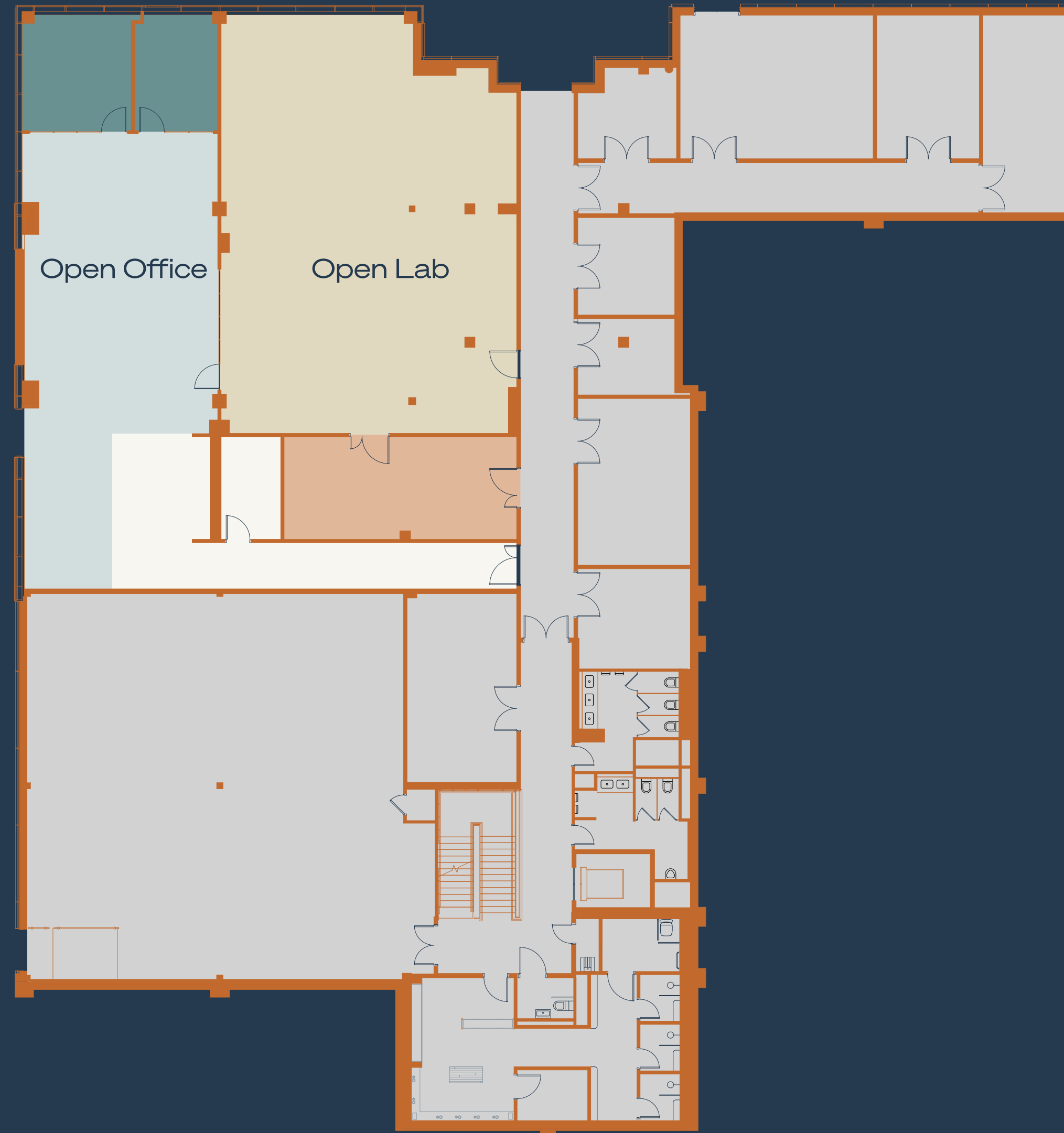


# CamLIFE 2 Level LG

| Level        | sq ft         | sq m         |
|--------------|---------------|--------------|
| 2            | 1,625         | 151          |
| 1            | 20,075        | 1,865        |
| G            | 20,807        | 1,933        |
| <b>LG</b>    | <b>12,002</b> | <b>1,115</b> |
| <b>Total</b> | <b>54,509</b> | <b>5,064</b> |

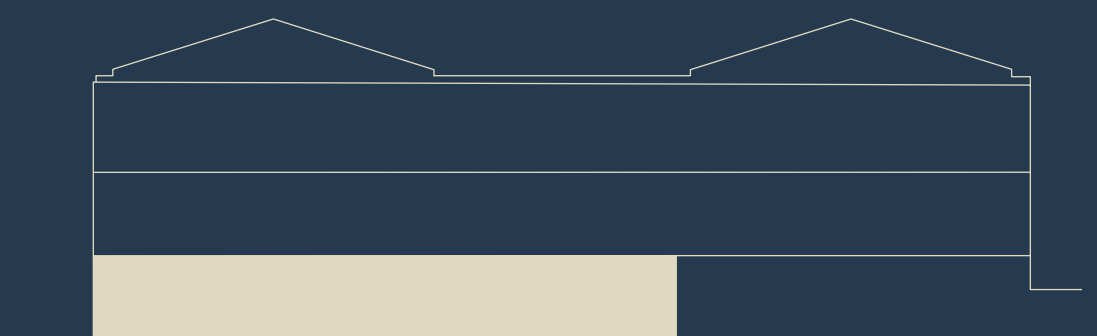
Areas are approximate GIA including plant, lobby and other shared zones. Areas are subject to final measurement on completion.

[View Floor Plan](#)



Key:

- Lab
- Lab/technical support
- Open office/collaboration
- Enclosed collaboration
- Shared space
- Plant



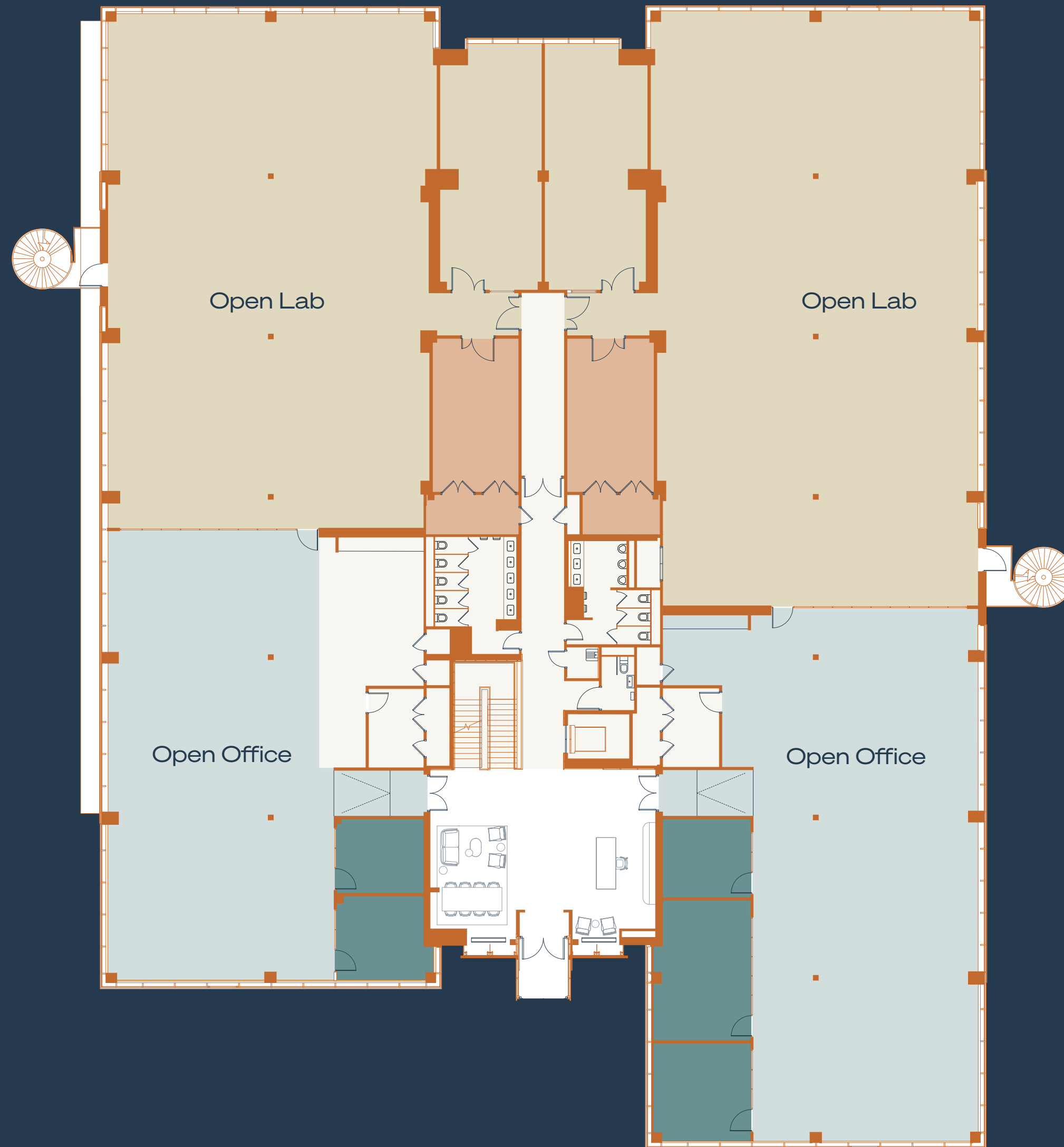
Scaled by 1.25x to view

# CamLIFE 2 Level G

| Level        | sq ft         | sq m         |
|--------------|---------------|--------------|
| 2            | 1,625         | 151          |
| 1            | 20,075        | 1,865        |
| <b>G</b>     | <b>20,807</b> | <b>1,933</b> |
| LG           | 12,002        | 1,115        |
| <b>Total</b> | <b>54,509</b> | <b>5,064</b> |

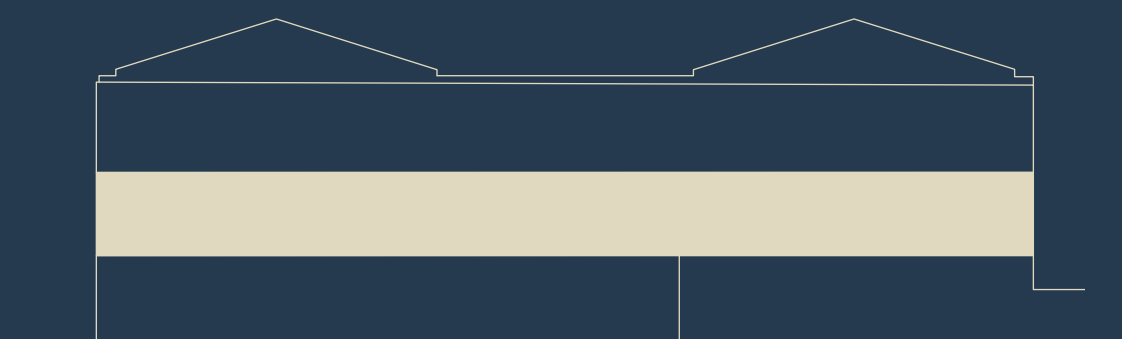
Areas are approximate GIA including plant, lobby and other shared zones. Areas are subject to final measurement on completion.

[View Floor Plan](#)



Key:

- Lab
- Lab/technical support
- Open office/collaboration
- Enclosed collaboration
- Shared space

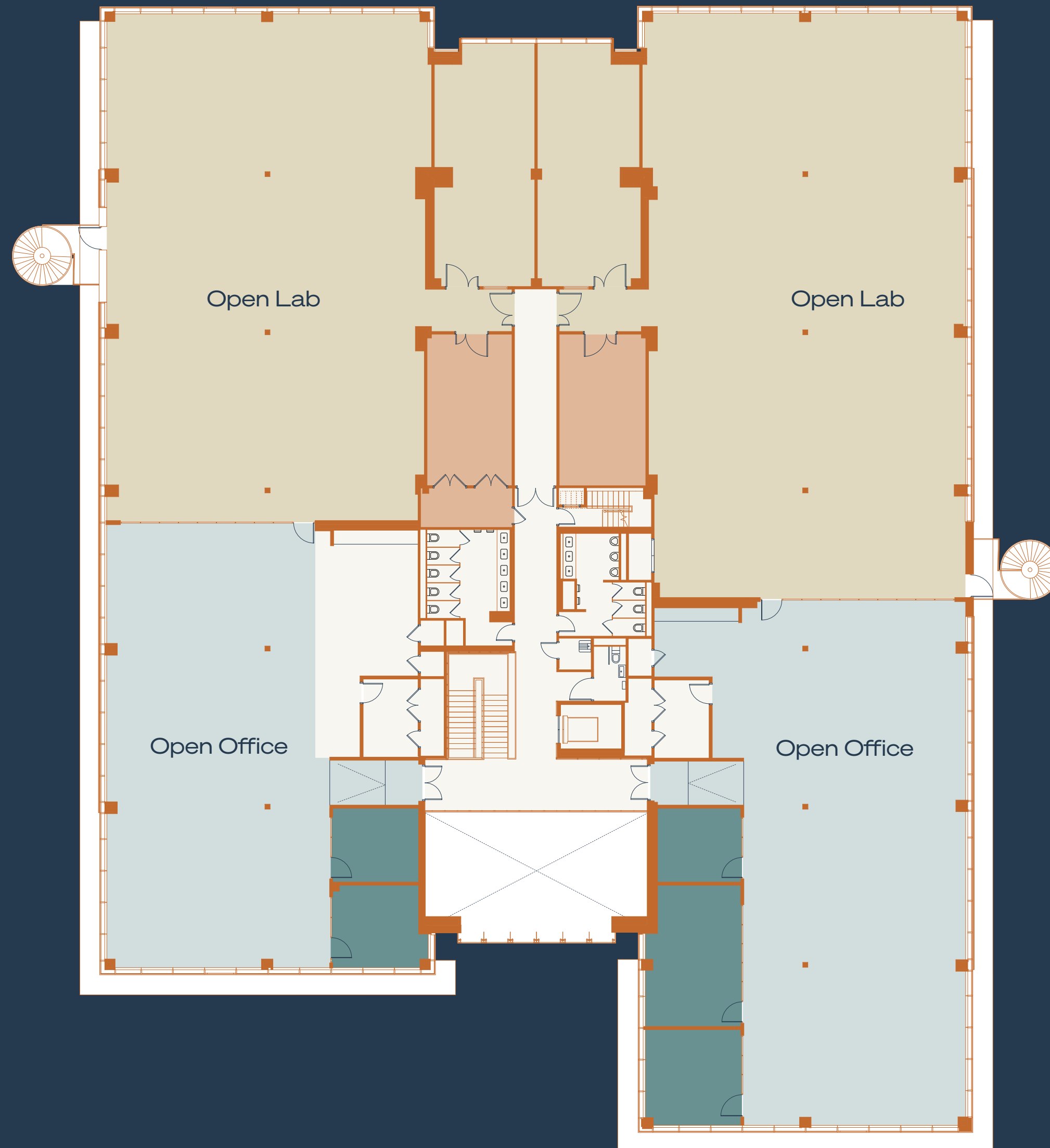


# CamLIFE 2 Level 1

| Level        | sq ft         | sq m         |
|--------------|---------------|--------------|
| 2            | 1,625         | 151          |
| 1            | 20,075        | 1,865        |
| G            | 20,807        | 1,933        |
| LG           | 12,002        | 1,115        |
| <b>Total</b> | <b>54,509</b> | <b>5,064</b> |

Areas are approximate GIA including plant, lobby and other shared zones. Areas are subject to final measurement on completion.

[View Floor Plan](#)



Key:

- Lab
- Lab/technical support
- Open office/collaboration
- Enclosed collaboration
- Shared space

